

XBOX 360.

XBOX
LIVE

ESRB

WORLD
CHAMPIONSHIP
POKER™
HOWARD LEDERER
ALL IN



CRAVE
GAMES

WARNING

Before playing this game, read the Xbox 360 Instruction Manual and any peripheral manuals for important safety and health information. Keep all manuals for future reference. For replacement manuals, see www.xbox.com/support or call Xbox Customer Support (see inside of back cover).

Important Health Warning About Playing Video Games

Photosensitive Seizures

A very small percentage of people may experience a seizure when exposed to certain visual images, including flashing lights or patterns that may appear in video games. Even people who have no history of seizures or epilepsy may have an undiagnosed condition that can cause these “photosensitive epileptic seizures” while watching video games.

These seizures may have a variety of symptoms, including lightheadedness, altered vision, eye or face twitching, jerking or shaking of arms or legs, disorientation, confusion, or momentary loss of awareness. Seizures may also cause loss of consciousness or convulsions that can lead to injury from falling down or striking nearby objects.

Immediately stop playing and consult a doctor if you experience any of these symptoms. Parents should watch for or ask their children about the above symptoms—children and teenagers are more likely than adults to experience these seizures. The risk of photosensitive epileptic seizures may be reduced by taking the following precautions:

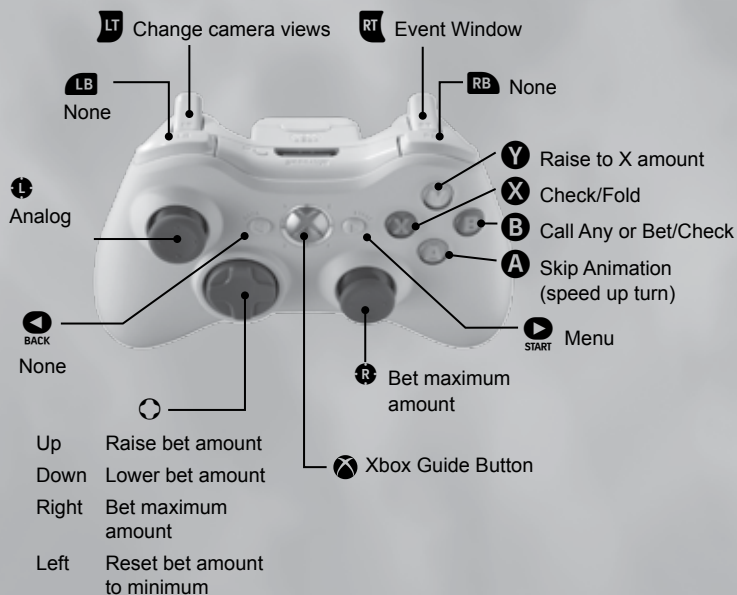
- Sit farther from the television screen.
- Use a smaller television screen.
- Play in a well-lit room.
- Do not play when you are drowsy or fatigued.

If you or any of your relatives have a history of seizures or epilepsy, consult a doctor before playing

TABLE OF CONTENTS

Controller2
Introduction3
Main Menu3
New Character4
Quick Play4
Career5
Your Pad5
Add Rules of Mix Games Stuff7
User Agreement8
Characters10
Warranty13

CONTROLLER



XBOX LIVE®

Play anyone and everyone, anytime, anywhere on Xbox Live. Build your profile (your gamer card). Chat with your friends. Download content at Xbox Live Marketplace. Send and receive voice and video messages. Get connected and join the revolution.

CONNECTING

Before you can use Xbox Live, connect your Xbox console to a high-speed Internet connection and sign up to become an Xbox Live member. For more information about connecting, and to determine whether Xbox Live is available in your region, go to www.xbox.com/live.

FAMILY SETTINGS

These easy and flexible tools enable parents and caregivers to decide which games young game players can access based on the content rating. For more information, go to www.xbox.com/familysettings

INTRODUCTION

Poker has seen an explosive growth in popularity in recent years. It is a popular spectator sport, and a popular amateur sport. Televised poker tournaments draw big ratings and big crowds.

The rise of poker has created a new professional athlete, the poker pro. These pros make the game seem simple but in reality it requires incredible skill in order to become a master.

Now you can join the ranks of the poker pro in World Championship Poker: Featuring Howard Lederer ALL-IN. Take in the elite of the poker community and see if you have what it takes to be called a pro. Get your poker face ready, let's shuffle up and deal!

MAIN MENU

Key features available from the Main Menu include:

QUICKPLAY

Select your game and limits and get right into the action. Even play as a pro.

SELECT A CHARACTER

Select a character that you have already created

NEW CHARACTER

This is where you create your own poker pro. Strut your stuff and define your own style.

LOAD

Load your saved characters and their careers.

EXTRAS

View the credits or learn the ins and outs of some of the game types.

After you have selected or created a character you can use it to play in the following modes:

CAREER

In Career Mode your player can play a year's worth of tournaments and private games as a professional poker player.

XBOX LIVE

Xbox Live is where you take your character and all of his winnings to play in online tournaments and matches.

SCENARIO MODE

Take your character into Scenario Mode to play in 9 different set up scenarios. You can unlock items in Scenario Mode that you can't unlock anywhere else in the game.

NEW CHARACTER

Before you can play a game, you will need to create a character. You can use a randomly created character or create your own character from scratch.

Cash Accounts: You start with \$1,000 for both online and offline play. Any progress you make or cash you win with a character will be saved to that character's account. Your offline career and online accounts are tied together, so if you take a beating online just relax and play some offline career games to win back your cash.

To create a character, select an "empty slot" from the character list. Now select your player's gender, body type and personality. If you want to see a random selection, press the Select button.

Once you have selected the main attributes press the Start to continue to edit your character's face, body and clothing. You can spend as much time as you want adjusting your character. In the world of the poker pros, defining your look and style can be an important part of your game.

To complete your character, press. Start. Next enter a name for your character Pressing Start again will prompt you to save your character. Once your character is saved, you're ready to play poker!

QUICK PLAY

This is the quickest way to launch a casual game of poker. The winnings or losses in this mode do not affect your character's statistics.

QUICK PLAY GAME OPTIONS:

Game Type: Select from a variety of different types of poker games. A detailed description of each game's rules appears in "The Games," below.

Limits: Choose what type of stakes you want to play for:

No Limit: Players may bet as much as they have in front of them.

Limit: Bets are set for each round.

Pot Limit: Player may bet as much as the amount of the pot .Stakes: Select the blinds or ante size.

Tournament: Tournament play allows you to play against a large number of players. The blinds are raised after a set amount of time.

Max Players: Choose the total number of players for your game If you've selected tournament, you can have up to 600 people play If tournament play is not selected the game is limited by table size. Casinos have tables with 8 seats, while other locations have tables with 6 seats.

Location: Choose where you want to play Casino locations have a dealer and have 8 seats per table while pad locations let the players deal their own cards and have 6 seats per table.

Time: Select how long players have to make a decision before they are forced to fold.

CAREER

Your professional poker career starts here. Your poker adventure begins in week one (1), where you can play in 1 of 7 events. As your skills and bankroll grow, you will be able to select different events from the world overview. Some events may cost more than you can afford, but as your skills and bankroll grow, you will be able to enter those games. Each week a new set of venues opens for play. Many different game types are available to enter Tournaments and Invitational's are games that have as many as 600 players playing at one time. These are long games, but the cash prizes are worth it. Private games are games that you play at home with your friends. You don't need to finish these games, just make more than you bring to the Table. These are great games to play if you are running low on cash and need a quick boost. Side games are like private games, but unlike your friends these players mean business. Keep an eye out for very special side games featuring heads up matches with poker pros. This is a great place to test your poker skills. Many of the side games, the tournaments and the invitational's offer bonus prizes as well as cash prizes. Since many matches overlap it will take you several weeks of play to collect all the prizes. Pick the games that suit your style of play.

YOUR PAD

When you start hosting private games you will play in your downtown apartment. As you gain money from playing, you eventually move to bigger homes in various locations around the map. There are five other pads you can upgrade to. In addition to those, the inside of your pad can be upgraded with new furniture and prizes. You want to make your pad look good because when you host an online game in your house, other players will see what you have.

Pawn Shop

The pawn shop is where you can buy new items for your pad and then sell them back when you need the cash. You can even take out a loan from the pawn shop with interest.

Skill Points

As you advance in your poker career you will become a more astute player and earn skill points. Skill points can be spent on increasing your poker playing skills. Some skills help directly with card playing, while others help with bluffing and telling. It is your choice on how you spend them.

Keen Eyes - This skill makes it increasingly easier to notice the bluffs and tells of other players. With a third rank in this skill after 25 hands this will tell you a player's play style.

Hand Strength - This skill will display your hand strength. First Rank displays Pre-flop strength. Second Rank constantly shows your hand strength. Third rank shows your hand strength and pot odds.

Stare Down - This skill will allow you to force a player to play the bluff/tell mini game. Each rank in this skill represents the number of times per hand you can perform this action. Note: To perform a stare down, on your turn press RT, and an eye icon will appear over the opponents HUD cards. Press A to activate the stare down.

Tough Read - This skill makes the mini game easier by slowing down the speed the ring rotates. Each rank will also decrease the chance of having to play the mini-game with a strong hand. A third rank will eliminate the mini game for strong hands.

Poker Face - Each rank in this skill will make effect the bluff tell mini games. The more you add to poker face, the easier it will be to achieve poker face when playing the mini game.

Luck - Luck gets used by way of your lucky charm You will start out with 1 lucky charm (you can win more charms in side games) but you will need to assign a skill point to Luck to be able to use it. All lucky charms work the same way. You can use your lucky charm once each session (tournament or cash game). The amount of luck you have increases with each skill point assigned. You will get the following results when you use your lucky charm:

1 skill point assigned - If you are ahead in the hand at the time it is used, you will not be drawn out on.

2 skill points assigned - If you have 5 outs or more at the time it is used, you will win the hand by the river.

3 skill points assigned - If you have any outs in the deck at the time used, you will win the hand by the river. If there are no outs in the deck no amount of luck will help you win.

Bluff-Tell Mini Game

The green zone is for a poker-face.

The red zone is for a bluff.

The yellow zones will present a tell.

If you do nothing, a tell is given by default.

Flaunting cards

At the point you win a hand to a fold you will be given the option to "flaunt" your cards. Use this to show big bluffs to improve your reputation. Be careful though, if you flaunt a strong hand to a fold your opponent will gain confidence and your reputation will go down slightly. You can also flaunt your big lay downs by holding down the Y button when you fold. If you make a big lay down and you are beat your reputation will go up.

Multiplayer

To fully experience World Championship Poker: featuring Howard Lederer All In, you will want to play on Xbox Live and test your skills against other players.

Before you can use Xbox Live, connect your Xbox 360 console to a high-speed internet connection and sign up to become an Xbox Live member. For more information about connecting, and to determine whether Xbox Live is available in your region, go to www.xbox.com/live.

Family Settings

These tools enable parents and caregivers to decide the games young players can access based on the content rating. For more information, go to www.xbox.com/familysettings.

ADD RULES OF MIX GAME STUFF

There are different kinds of mix games in poker. They are identified by an acronym used to help the player remember the order of the games. A popular version is H.O.R.S.E., in this case, the five games are:

- * H: Hold'em
- * O: Omaha Hi-Lo
- * R: Razz
- * S: Seven-card Stud high
- * E: Seven-card stud Eight or better, or hi-lo

If you are playing a H.O.R.S.E mix game, the game will change every time the dealer button makes a full round

During each rotation each version of poker is played according to the rules of that game.

HOME ROUTER/FIREWALL CONFIGURATION INFORMATION

Crave Entertainment does not support the use of firewalls or routers for multiplayer online play. Because firewalls, routers and Internet sharing are increasingly common in the home network environment, the following configuration information is provided for advanced users who wish to customize their home network settings in order to accommodate online multiplayer play. CRAVE ENTERTAINMENT ASSUMES NO LIABILITY

FOR DAMAGE RESULTING FROM THE CONNECTION OF ANY DEVICE TO THE Xbox 360 console, NOR THE LOSS OF DATA OR OTHER PROBLEMS RESULTING FROM ANY CHANGES YOU MAKE TO YOUR EXISTING ROUTER/FIREWALL NETWORK SETTINGS.

World Championship Poker: featuring Howard Lederer All In supports "NAT negotiation," a system that tries to find open ports with firewalls and routers, allowing for a full game experience. This process may delay connections. To achieve the best performance, do not run World Championship Poker: featuring Howard Lederer All In behind a firewall. It may take several minutes for video and voice chat to connect if you are playing behind a firewall. Note: Gameplay will continue as normal while video and voice chat connects.

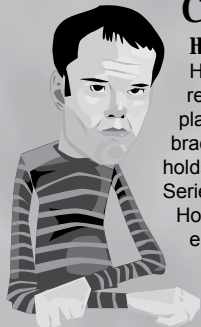
If you are still having difficulty with online multiplayer play, or with voice chat or streaming video via the Xbox Live® Vision camera consider connecting your Xbox 360 directly to your broadband connection. Some modern home routers have built-in support, which can keep devices outside the local net-work, by passing the local firewall. To enable this feature please consult your home router manual for details on setup and configuration.

USER AGREEMENT

1. GRANT OF LICENSE. CRAVE ENTERTAINMENT ("PUBLISHER") grants you a non-exclusive right to use this software for play on an Xbox 360 entertainment console only. You may not (i) rent, lease or sublicense the software, (ii) modify, adapt, translate, reverse engineer, de-compile or disassemble the software, (iii) attempt to create the source code from the object code for the software, or (iv) download game content for any purpose other than game play. You may, however, transfer all your rights to use the software to another person provided that you transfer the original product and this Agreement with the software.
2. WARRANTY/DISCLAIMER. PUBLISHER WARRANTS TO THE ORIGINAL PURCHASER OF THE GAME DISC THAT THE DISC IS FREE FROM DEFECTS IN MATERIALS AND WORKMANSHIP FOR A PERIOD OF NINETY (90) DAYS FROM THE DATE OF PURCHASE. SEE GAME SOFTWARE MANUAL FOR LIMITED WARRANTY DETAILS. EXCEPT AS PROVIDED HEREIN, THE GAME DISC, SOFTWARE AND ALL RELATED SERVICES ARE PROVIDED "AS IS" AND, TO THE MAXIMUM EXTENT PROVIDED UNDER LAW, PUBLISHER DISCLAIMS ALL WARRANTIES OF ANY KIND, WHETHER EXPRESS OR IMPLIED, INCLUDING BUT NOT LIMITED TO ANY WARRANTIES OF MERCHANTABILITY OR FITNESS FOR A PARTICULAR PURPOSE. Without limiting the foregoing, PUBLISHER does not promise that this software will work properly with any network adaptor, modem, memory card or other peripheral device that has not been licensed by PUBLISHER. To insure compatibility use only Xbox 360 licensed products. Additionally, PUBLISHER does not guarantee that you will be able to play this game at any time you want. From time to time, there may be problems related to access, delay and failure to perform that are beyond the immediate and reasonable control of PUBLISHER. In the event of a dispute regarding the online functionality of this software, you agree that the sole liability of PUBLISHER and its affiliated companies will be limited to repair or replacement of the game software at PUBLISHER's option. PUBLISHER has no liability for such discontinuance. You are hereby advised that game play experience may change during online play, and the PUBLISHER has no liability for any such change in game play experience.
3. LIMITATION OF LIABILITIES. In no event will PUBLISHER or their affiliates, suppliers and licensors be liable for any indirect, special, incidental, economic, cover, consequential, exemplary or punitive damages arising out of the use of or inability to use the software, use documentation, or related technical support, including, without limitation, damages or costs relating to the loss of profits, business, goodwill, data or time, even if advised of the possibility of such damages. In no event will PUBLISHER and their affiliates', suppliers', and licensors' liability exceed the amount paid by you for the software regardless of the form of the claim (including, without limitation, any contract, product liability, or tort claim). Because some jurisdictions do not allow the exclusion or limitation for consequential or incidental damages, the above limitation may not apply to you.
4. GOVERNING LAW. This Agreement shall be construed and interpreted in accordance with the laws of the State of California applying to contracts fully executed and performed within the State of California, exclusive of its conflicts of law provisions. Both parties submit to personal jurisdiction in California and further agree that any dispute arising from or relating to this Agreement shall be brought in court within the state and federal courts located in Orange County, California.
5. ENFORCEABILITY. If any provision of this Agreement shall be held invalid or unenforceable, in whole or in part, such provision shall be modified to the minimum extent necessary to make it valid and enforceable, and the validity and enforceability of all other provisions of this Agreement shall not be affected thereby. You acknowledge and agree that, in addition to any and all other remedies available to PUBLISHER in the event of a breach of this Agreement by you, PUBLISHER shall have the right to enjoin any activity by you which breaches this Agreement, by equitable relief, including, but not limited to, a temporary restraining order, a preliminary injunction, a permanent injunction, or such other alternative relief as may be appropriate, without the necessity of PUBLISHER's posting any bond or other surety.

CHARACTERS

HOWARD LEDERER "THE PROFESSOR OF POKER"



Howard Lederer has quickly become one of the most respected players around. Howard is an intellectual player who has won two World Series of Poker bracelets and two World Poker Tour tournaments. He holds thirteen major poker titles including the World Series of Poker and World Poker Tour championships. Howard left college to become a chess player, but ended up becoming a poker player instead. He worked by day and played by night. After many losses, he found a way to make a living at the poker table and become the player he is today. He taught his sister, Annie Duke to play as well, and she is now one of the best known female poker players and

extremely successful. Howard has developed a full array of poker products that all contain educational components. For more information, visit www.howardlederer.com

ANNIE DUKE



Born in Concord, New Hampshire, she began playing poker at age 22 and left the University of Pennsylvania to play poker. She learned the game from her brother Howard Lederer - who she considers one of her most respected players.

Annie works with UltimateBet.com, where she promotes the site and writes articles on poker. Annie is considered by most to be the best female poker player in the world and she regularly proves that women can excel in poker, which has traditionally been dominated by males. She is the top female World Series of Poker money winner in history and will always be remembered when she finished in 10th place at the

WSOP when she was eight months pregnant. For more

information on Annie, visit www.annieduke.com

ROBERT WILLIAMSON III

Robert was a born poker player. He waited on his father's game at five and was playing by age 10. So it's no surprise that someone who started so early was already had a lot of success. Known for his Pot Limit Omaha expertise, Robert Williamson III won a WSOP bracelet in that event in 2002.



Williamson's career goal is simple - to win more gold bracelets. Although PLO is his favorite tournament game, Williamson likes to play mixed games or triple-draw lowball in cash games. For more information on Robert, visit www.rwiii.com



THOMAS BIHL

With no more than two years of professional experience Thomas Bihl AKA "Buzzer" is considered one of the best online poker players in the world. Born and raised in Germany Thomas began his poker experience in May of 2004. Six weeks later, he won a 1,600 player online tournament and established himself as a premier online poker player. Thomas is best known as a Sit'n'Go specialist, a discipline where he progressed through the ranks and nowadays can be found playing and winning the highest tournament buyins online. Whenever Thomas feels the need for a change, he enjoys the challenge of live poker tournaments and has made several final tables (including a win) mainly in European Ranking Events.

ERIN NESS

In 2005 Erin attracted the poker world's attention by becoming the third highest placing woman in the main event of the World Series of Poker. She earned her seat in the tournament by winning a company poker tournament at Maxim Magazine, where she works as a photo producer. Subsequent to her finish at the WSOP she competed in the televised Poker Royale: Young Bloods tournament where she placed second to David Williams. Erin still continues her day job at Maxim, but tries to play poker as often as she can www.erinness.com



MARCEL LUSKE "THE FLYING DUTCHMAN"

His signature upside down sunglasses and musical contributions at the table make Marcel one of the most memorable and popular players in the game today. With over 80 significant tournament finishes internationally during his career, it was the 2003 and 2004 WSOP Main Events that put him in front of the poker public and have made him one of the most respected and most watched players on the circuit. Marcel was the European Poker Awards Player of the Year twice, in 2001 and 2004. Outside of poker, Marcel holds a black belt in karate. For more information on Marcel, visit www.marcelluske.com



PUBLISHED BY CRAVE ENTERTAINMENT, INC.

**Senior Vice President,
Crave Studios**
Jim Flaharty

**Senior Vice President of
Product Planning and
Business Development**
Mark Burke

Senior Producer
Kathy Bucklin

**Senior Quality Assurance
Manager**
Jason Dickson

Quality Assurance Leads
Dominic Zenquis
Reed Livingston

Quality Assurance
Frank Hernandez
Jerry Rivas
Joey Willard
Stephan Micu Salvador
Rojas Paolo Obra
John Maurer

Director of Marketing
Sheri Snow

Packaging Design
Binary Pulse

Photography
Bill Reiss

Special Thanks
Nima Taghavi
Michael Maas
Rob Dyer
Stacey Ganem
Doug Panter
Thomas Quast
Amy Weltman
Dave Golder
Chad Meshek

POINT OF VIEW INC. CREDITS

Project Lead
Rob Sandberg

Producer/Designer
Jon Sieker

Associate Producer
Antonio Trillo

**Lead Artist/Project
Management**
Benjamin Naumann

Lead Animator
Thomas Konkol

Animation
Ken Angliongto
Josh Jertberg

Senior Character Artist
Jung Lee

Artists
Eric Piccione
My Wu
Gary Frye
Mike Tamura
Josh Jertberg
Chris Choi
Dan Huynh

Point of View Art Director
Thomas Jung

Additional Art
Loan Ma
Samuel "Sang" Bahn
Mike Posis
Chuck Workman
Mike Dudley
Garrett Yanai
Mike Nicholson
Joe Cesario

Lead Programmer
Steven Lashower

Console Leads
Carlos Bustamante
Alex Dubnik

**AI Design and
Programming**
Jonathan Stair

Shader Programming
Chris Anderson
Paul Im

Programmers
Bryan Perfetto
Dennis Devore
Michael Wildermuth
David Tan

Engine Programmers
Chris Warner
Steven Lashower
Mike Terlecki
Technical Director
Mike Michaels

Additional Programming
Iain Davies

**Motion Capture
Technician**
Matt Jenkins

Motion Capture Actor
Richard Dorton

Voice Artists
Jon Sieker
Chuck Workman

Extra Special Thanks
Howard Lederer
Annie Duke

Robert Williamson III
Thomas Bihl
Marcel Luske
Erin Ness
Rick Bierman
Lea Shifflet
Gary Frye
Gregory Lemon
Geena The Latina
Julie Ann Ota
Kris Delprado
Jean-Louis Clement
Toni Jertberg
Methelyn Galvesolo
Ariel Lin
Margo Herrera
Sandra Hamideh
Sheila Maquilan
Chad Manes
Steve Mendez
Richard Dorton
Jason Tyra
Jeff Wheeler
Rob Sandberg
Scott Hudson

Special Thanks
Jeff Warner
Vince Lee
Adrian Gallegos

Lea Shifflet
Bob Cantrell
Beverly Taylor
Nicole Hubble
Irvine Studios
Martin Lavoie

Dedicated to
Don Sandberg

WARRANTY INFO

CRAVE ENTERTAINMENT, Inc. warrants to the original purchaser of this CRAVE ENTERTAINMENT, Inc. product that the software storage medium in the product is free from defects in material and workmanship for a period of ninety (90) days (unless prohibited by applicable law) from the date of purchase. The CRAVE ENTERTAINMENT, Inc. software program in this product is sold "AS IS" and without any expressed or implied warranties for losses or damages of any kind resulting from use of the software program. If the CRAVE ENTERTAINMENT, Inc. product fails to comply with this limited warranty, CRAVE ENTERTAINMENT, Inc. agrees to either repair or replace, at its option, free of charge, the non-complying product, provided the product is returned by the original purchaser, postage paid, with proof of purchase to CRAVE ENTERTAINMENT, Inc. at the address set forth below. When returning the product for warranty replacement, please send the original product disc(s) only in protective packaging and include: (1) a photocopy of your dated sales receipt; (2) your name and return address typed or clearly printed; and (3) a brief note describing the defect, the problem(s) you are encountering and the system on which you are running the product. If you are returning the product after the 90-day warranty period, but within one year after the date of purchase, please include check or money order for \$15 U.S. currency per disc or cartridge replacement. Note: Certified mail recommended.

In the U.S. send to:
Warranty Replacements
Crave Entertainment, Inc.
4 San Joaquin Plaza, Suite 200
Newport Beach, CA 92660

This warranty shall not be applicable and shall be void if the defect in the CRAVE ENTERTAINMENT, Inc. product has arisen through abuse, unreasonable use, mistreatment, neglect or reasonable wear and tear. THIS WARRANTY IS IN LIEU OF ALL OTHER WARRANTIES AND NO OTHER REPRESENTATIONS OR CLAIMS OF ANY NATURE SHALL BE BINDING ON OR OBLIGATE CRAVE ENTERTAINMENT, INC. ANY IMPLIED WARRANTIES APPLICABLE TO THIS SOFTWARE PRODUCT, INCLUDING WARRANTIES OF MERCHANTABILITY AND FITNESS FOR A PARTICULAR PURPOSE, ARE LIMITED TO THE NINETY (90) DAY PERIOD DESCRIBED ABOVE. IN NO EVENT WILL CRAVE ENTERTAINMENT, INC. BE LIABLE FOR ANY DIRECT, SPECIAL, INCIDENTAL OR CONSEQUENTIAL DAMAGES RESULTING FROM POSSESSION, USE OR MALFUNCTION OF THE CRAVE ENTERTAINMENT, INC. SOFTWARE PRODUCT. Some states do not allow limitations as to how long an implied warranty lasts and/or exclusions of liability may not apply to you. This limited warranty gives you specific legal rights and you may also have other rights, which vary, from state to state.

Customer Support
You may need only simple instructions to correct a problem with your product. Call the Customer Service Line at 949-219-1199, 9:00am-5:00pm PST.

Microsoft, Xbox, Xbox 360, Xbox Live, the Xbox logos, and the Xbox Live logo are either registered trademarks or trademarks of Microsoft Corporation in the U.S. and/or in other countries.

Anywhere in the manual, offering/contact info must conform to minimum defined by PLA/Xbox Guide

Publisher will provide contact information (including without limitation street address and telephone number, and the applicable individual/group responsible for customer support.

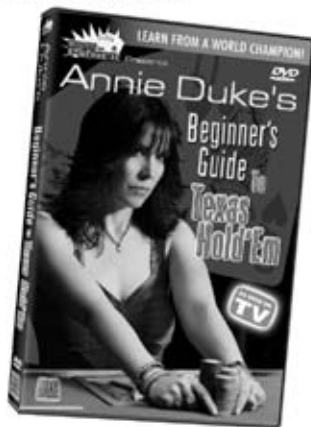
**BEAT THE GAME THEN
BEAT THE BIG BOYS!**



Learn How With World Champ Annie Duke



"The best all-around woman poker player in the world today." —Phil Hellmuth, Jr.



START TODAY!

MASTERS OF POKER For All Your Poker Needs

MastersOfPoker.com



ROBOSAPIEN™ V2

HUMANOID, INTERACTIVE, WAY COOL

Built on the foundation of Robosapien™—the bestselling robot of all time—Robosapien V2 is the next generation in consumer robotics.

Towering over your living room floor at a remarkable 22" in height, Robosapien V2 offers more advanced dynamic motion, powerful interactive sensors, natural speech capability, and, of course, a unique personality. The only humanoid entertainment robot who can strut his stuff, Robosapien V2 uses fluid biomechanical movements for walking, bending, sitting, standing, lying down, standing up, and dancing. Armed with articulated shoulders and wrists, movable hands, and a flexible waist, Robosapien V2 can dance his way around your home.

"GIMME, GIMME, GIMME"

Unlike other robots, Robosapien V2 can interact with his environment, autonomously. Whether filled with furniture, pets, or people, this robot can see, hear, and walk his way around your house avoiding obstacles in his path. This is free roam mode. Using a unique infrared (IR) vision system and elaborate touch sensors, Robosapien V2 will act like one of the family during these free roam strolls.

"LET ME SCAN THAT"

Make a sudden movement in Robosapien V2's line of vision and he will flinch and ask you to identify yourself. Once identified, you will be tracked with a sophisticated IR vision system. But there is more than IR vision that meets this robot's eye. Robosapien V2 can see colors, too. Red, green, and blue objects can be recognized and tracked with his color vision camera.

"GET YOUR OWN DRINK"

Remember that personality that you liked so much in Robosapien? Well, it's fully developed in Robosapien V2. Diabolical laughter and sharp-tongued robot wit are all dispensed in clear understandable speech. Packed with over 120 comments, reactions, and observations, Robosapien V2 is downright chatty.

"GROUP HUG"

Control Robosapien V2 directly or program your own sequence of moves, if you don't like the way he's acting. Packed with 100 pre-programmed functions and 6 programming modes, this robot also has 2 demo programs for an instant "out-of-the-box" WOW.

"WHAT WAS THAT?"

If you put him in "Guard Mode", Robosapien V2 won't sleep on duty. Guarding your most valued possessions, he'll alarm intruders and give you a final head count of all disturbances.

If some of your family members are robots, too, like Roboraptor™ and Robopet™, Robosapien V2 is capable of interacting with these fellow Robo companions.



For information on where to buy Robosapien V2
visit us on the web at <http://www.wowwee.com> or call toll free 1-800-310-3133
© 2006 WowWee Ltd.

